

## Technical specification

### UV Flatbed

#### Printing Technology

Print head	Ricoh GEN5 or GEN6		
Print head quantity	3-8 (9) heads Ricoh		
Speed - based on head setup	<b>Ricoh Gen5</b>	<b>Ricoh Gen6</b>	
Express	45 sqm/h	62 sqm/h	Typical speed for W-CMYK, single-lay graphics
Production	30 sqm/h	41 sqm/h	
Top Quality	23 sqm/h	31 sqm/h	

#### Resolution & Software

Resolution	3600dpi Max.
Software	Standard SAI Photoprint (Onyx, Caldera)

#### Media

Max media width	2500mm*1300mm
Max media thickness	100mm
Media type	Rigid and flexible flat materials

#### Inks

Ink	Xenons NON-SCRATCH UV/LED curable ink (VOC free)
Ink color	C, M, Y, K, Lc, Lm, V, W
Ink supply system	2500ml large bulk system with automatic supply and ink recirculation
Ink curing system	Dual LED UV curing system

#### Dimensions & Weight

Machine dimension	4300mm*2130mm*1400mm
Packing size	4700mm*2150mm*2000mm

#### Optional equipment

Media position pins	Yes
Vacuum control pedal	Yes
Reverse vacuum system	Yes

#### Special motor

Magnetic levitation motor	Optionally available, with metallic raster
---------------------------	--

Specifications are subject to change without notice. No responsibility for errors and typos in this sheet.

# XENONS

## UV Flatbed Series

### X2513 Young Brother

The first choice in decoration business. Glass, wood, metal, acrylic, plastics, carpet...We do all what is in your mind.

#### Key Features

- ▶ High-precision, high-speed and long-life industrial printhead Konica Ricoh Gen5 or Gen6
- ▶ Vacuum sucking working table (4 zones) makes various printed materials be fixed easily and fast.
- ▶ Wide printing size and fitting in with thickest 100mm printed materials expand the application areas to the hilt
- ▶ Effective and reliable Anti-crash system prevents the industrial printheads from being damaged accidentally
- ▶ Stable and reliable servo motor Japan provides strong power for most accurate a smooth printing
- ▶ High speed dual guide rail with low noise and high wear resistance from Japan THK guarantees the movement stability of X,Y axis.
- ▶ Magnetic levitation motor available as option for most accurate and smooth printing
- ▶ Newly-developed automatic negative pressure control system.
- ▶ Reverse vacuum function available as option



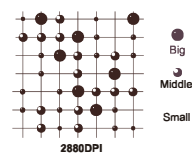
FOR MORE INFORMATION, PLEASE CONTACT US

Web: [www.xenons.info](http://www.xenons.info) Tel: +420 605 449 156 Web  
[www.xenons.cn](http://www.xenons.cn) Email: [sales@xenons.info](mailto:sales@xenons.info)

XENONS® Group

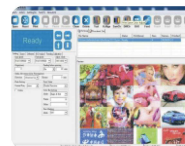
Total Digital Inkjet Printing Solutions

# UV flatbed Series



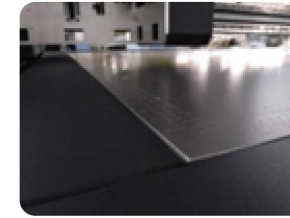
## 1. Photographic Image output

YILIJET's patent VSDT technology delivers a ultra high quality prints with multi drop dots from 7pl to 35pl



## 2. Preview of your printing job

With this GUI, you can check the printing situation to better arrangement, as well you can get the whole printing history of your printer



## 5. Automatic Registration Pin System

Automatic registration pin system aid easy edge to edge printing, which simplifies the media location and ensure high precision printing output.



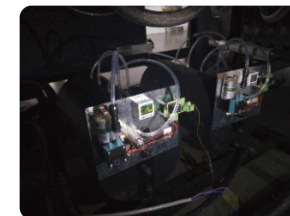
## 6. Secondary cartridge independent heating system

Temperature of secondary cartridge controlled by software.



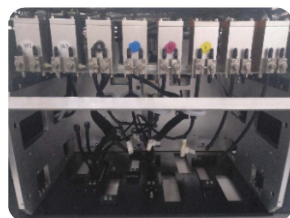
## 7. White ink Re-circulation System

Xenons flatbed series printer offers eight major utilizing white ink applications. White ink re-circulation results in an effective elimination of ink starvation and protects print heads from clogging hazard.



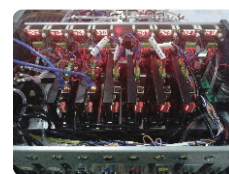
## 8. Dual Automatic Negative pressure Adjustment System

Independent negative pressure system for white color provide guarantee for continuously and stable printing. Self-adjusting design makes negative pressure more stable.



## 3. Variable color conguration + easy upgrade

Standard 4 Color plus white, Light Magenta, Light Cyan, Varnish ink for option. Satisfy different customers for high speed, high resolution, special white and varnish application on different substrates.



## 4. Anti-crash Sensor, Resume print after E-stop

The safety anti-crash sensor can detect the media circumstance beforehand and protect the print heads from a crush hazard. After that, you can resume printer, which will help you save media.

## Application:

Metal, Plastic, Glass, Wood, Ceramic, Acrylic, Leather, etc

