

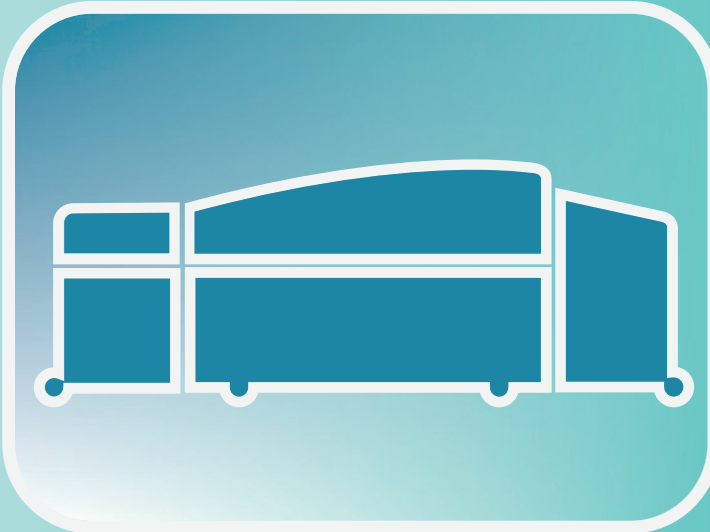
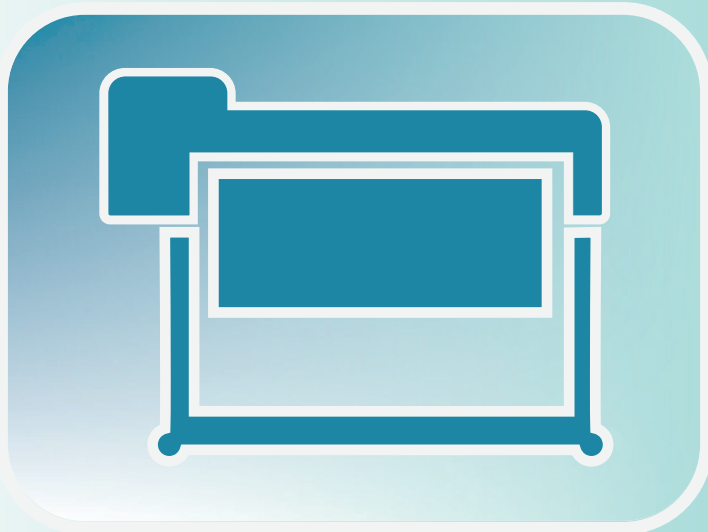
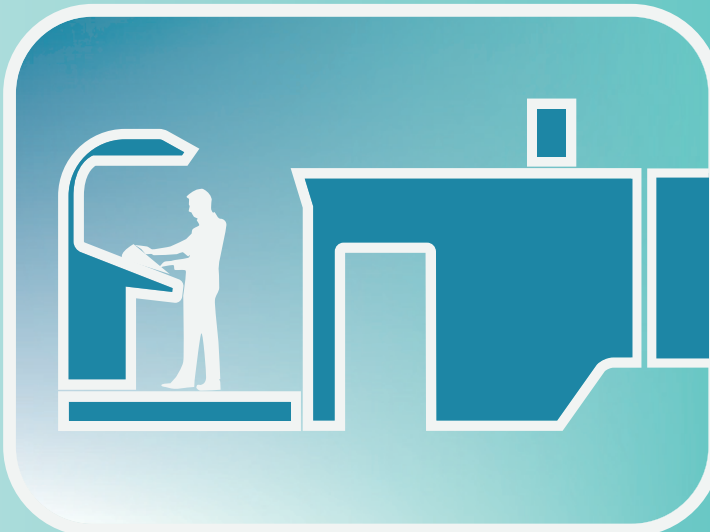


pressSIGN PANTONE® licensed

pressSIGN

intelligent printing

flexible. easy. intelligent.
accurate color on all printing devices



ISO 12647 Standards
ISO 15339 Standards
Japan Color Standards
GRACoL G7
SWOP
or any user defined standard

Bodoni Systems
the colour experts

intelligent printing

pressSIGN provides color measurement data to help to control the printing process on all forms of production printing including offset, gravure, flexo, screen and digital devices enabling consistently accurate color throughout the job. It displays press adjustment information targeting international or custom standards.

Make-ready and preparation times are greatly reduced along with an improvement in print quality. Matching all international printing standards is easy. **pressSIGN**'s unique Dynamic Density Adjustment (DDA) makes matching spot and process solids simple. **pressSIGN** supports all major RIP formats. Exporting tonal curve adjustments to your RIP or PDF workflow is fast and effective.

Consistently accurate color is easier to achieve, whatever the print process, whatever the number of colors, whatever the color bar.

benefits

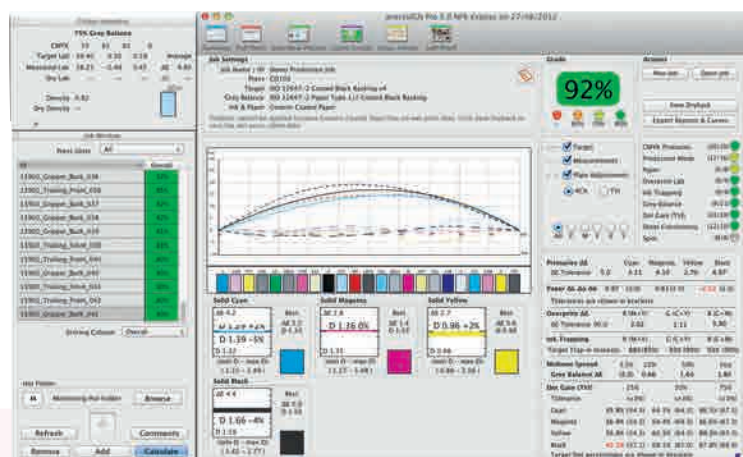
Whatever your role in the color print process, **pressSIGN** will help you improve quality and productivity. All versions of the software share the easy to use interface which shows an overall percentage score and traffic light indicator of quality.

Print buyers can create print standards which include the target, the tolerances and the acceptable quality level. Print buyers can lock the standard and export it to their print supplier so both parties know what is required from the print job.

Operators enjoy the clear, single interface showing them how to adjust density to get to the lowest possible Delta E, either for each ink key across the press or averaged for the printed sheet.

PrePress departments can export tonal adjustment curves quickly to a wide variety of the most popular workflow & RIP formats, or the PDF workflow. In most cases without having to type in the adjustments manually and so maintaining production efficiency.

Print Managers use the analysis and reporting functions to monitor where problems arise and help resolve them. Reports show Job, Make-ready and Measurement times, enabling managers to compare the performance of different sites, presses, operators and shifts.



unique features

- dynamic density adjustment

For traditional offset, flexographic and gravure printers, **pressSIGN**'s unique Dynamic Density Adjustment (DDA) guides the operator to the lowest Delta E. By measuring only one solid patch DDA calculates the correct density adjustment. **pressSIGN**'s DDA dynamically responds to the current printing conditions accounting for paper, ink, chemistry and environment.

- dry back compensation

ensures the color is correct when the product arrives with the customer. All printers know there can be a color shift as the ink dries. **pressSIGN** users can quickly and easily compensate for this dry back for different in and paper properties both for process and spot colors.

- dot gain/tonal curve export

pressSIGN offers 3 options for tonal curve calculation adjustments, traditional TVI (dot gain), 4CX (4 Color Exchange) and NPDC Neutral Print Density Curve for those familiar with GRACol G7 curves.

- 4CX technology

is a new way of achieving accurate grey balance using the data from ICC profiles and is of particular value with digital printing devices.



Just apply the tonal curve adjustment recommended by **pressSIGN** to the RIP or PDF workflow and see the results - perfect grey balance.



- spot colour libraries

PANTONE® libraries are included with all versions of **pressSIGN** plus the ability to create custom spot colors & libraries which can be exported and shared with other users. **pressSIGN** can monitor from 1 to 16 colours, spot or process.

- soft proofing

is included with **pressSIGN-Pro** and **Trends** clients. Compare on screen, the measured sheet with the print target.

The soft proof window lets you see the impact the paper color has on the image even before you begin printing.

See the difference between the printed sheet and the print target standard.

The soft proof module also allows you to **Preview** & simulate the effect of updating the tonal curves.





4 versions of pressSIGN

choose the version of pressSIGN you need
(see the compatibility chart below)

- **pressSIGN Global Print Management**
for larger enterprises with print sites or suppliers in multiple locations. Centralise all measurements with pressSIGN GPM Server. Set group-wide standards, custom spot colors & more. Monitor and compare the performance of sites, presses, operators, shifts etc. GPM includes the same clients and capabilities as pressSIGN-Pro. Upload print standards, color libraries, client Names etc and distribute automatically.
- **pressSIGN-Pro**
for those who want to ensure every print job meets the target standard. pressSIGN-Pro shows the operator how to adjust each ink key across the press. It enables export of tonal curves and provides powerful analysis tools to help improve quality and productivity.

- **pressSIGN-Standard**
standard edition - designed for basic process control curve export and of particular benefit in digital printing.
- **pressSIGN-PrintBuyer**
for those specifying print. Set the standard along with any Pantone® or custom spot colors. Measure the sheet using pressSIGN-PrintBuyer to confirm it meets the print target requirements.

	Global Print Management	Pro	Standard	PrintBuyer
functions	●	●	●	●
standards				
ISO 12647-2, ISO 12647-3, ISO 12647-4, ISO 12647-6, ISO 12647-7	✓	✓	✓	✓
GRACol G7, ISO/PAS 15339	✓	✓	✓	✓
Japan Color	✓	✓	✓	✓
CMYK ICC Profile	✓	✓	✓	✓
multi-color ICC Profile	✓	✓		
previous measurement	✓	✓	✓	✓
user defined	✓	✓	✓	✓
supported spectrophotometers				
X-Rite EyeOne/ i1 Pro 2, iO2 Table, Spectro-Eye, 530, eXact	✓	✓	✓	✓
X-Rite EasyTrax, IntelliTrax	✓	✓		
Techkon SpectroDens	✓	✓	✓	✓
Techkon SpectroJet, SpectroDrive	✓	✓		
Barbieri LFP, Swing, Spectropad Series 2	✓	✓	✓	✓
Konica Minolta FD-7	✓	✓	✓	✓
Data Import				
CxF	✓	✓	✓	✓
SVF & JDF files, CGATs from Heidelberg, Image & Axis Control, Komori PDC and Others	✓	✓		
Print Standards, Measurements, ICC Profiles, Color Bars, Templates	✓	✓	✓	✓
Data Export				
Tab Delimited, CxF	✓	✓	✓	✓
XML	✓	✓		

	Global Print Management	Pro	Standard	PrintBuyer
functions	●	●	●	●
reports				
label print function	✓	✓	✓	✓
pdf measurement report with Tonal Curves	✓	✓	✓	
pdf scoring and production reports	✓	✓		
information screen views				
summary without density adjustment info				✓
summary with density adjustment info	✓	✓	✓	
full sheet view - showing ink zones	✓	✓		
score trends view	✓	✓		
value trends view	✓	✓		
NPDC	✓	✓	✓	✓
soft proffe module	✓	✓		
make ready/production mode	✓	✓		
spot colors				
Pantone® libraries	✓	✓	✓	✓
custom spot libraries	✓	✓	✓	✓
CMYK + 2 Spots			✓	✓
CMYK + 12 Spots	✓	✓		
spot color tints	✓	✓		
additional clients				
standard clients			✓	
Pro Clients	✓	✓		
Trend / Mobile Clients	✓	✓		
color adjustment information				
density for all solids	✓	✓	✓	
tonal adjustments / dot gain / curve output - TVI, 4CX, NPDC options	✓	✓	✓	

Bodoni Systems
the colour experts

t : +44 (0) 1923 220 530
e : info@pressSIGN.com
w : pressSIGN.com

Mac:
Mac OS 10.7 to Mac OS 10.12
4GB RAM
1 USB port for dongle.
color monitor: 1280 x 1024

PC:
Windows 7/8/10 32/64 bit
4GB RAM
1 usb port for dongle
color monitor: 1280 x 1024