

SPECIFICATIONS

Model	HT1610UV		HT2512UV				HT3020UV			HT3116UV		
Printhead	Ricoh Gen5	Kyocera KJ4A	Ricoh Gen5	Kyocera KJ4A			Ricoh Gen5	Kyocera KJ4A		Ricoh Gen5	Kyocera KJ4A	
Quantity of printheads	2-4 pcs (Single row)	2-4 pcs (Single row)	3-8 pcs (Double rows)	3-4 pcs (Single row)	4-8 pcs (Double rows)	10 pcs (symmetric array)	4-8 pcs (Double rows)	4-8 pcs (Double rows)	10 pcs (symmetric array)	4-8 pcs (Double rows)	4-8 pcs (Double rows)	8 pcs (symmetric array)
Resolution	1200*1200dpi											
Draft	20m ² /h	36m ² /h	42m ² /h	48m ² /h	68m ² /h	100m ² /h	54m ² /h	95m ² /h	140m ² /h	50m ² /h	90m ² /h	130m ² /h
Print speed												
Production	13m ² /h	27m ² /h	30m ² /h	33m ² /h	53m ² /h	78m ² /h	38m ² /h	70m ² /h	95m ² /h	36m ² /h	66m ² /h	90m ² /h
Quality	9m ² /h	20m ² /h	21m ² /h	23m ² /h	40m ² /h	56m ² /h	27m ² /h	53m ² /h	73m ² /h	25m ² /h	51m ² /h	70m ² /h
Print mode	Unidirectional and bidirectional											
Max width	1.6m * 1.0m		2.5m * 1.22m				3.05m * 2.05m			3.05m * 1.5m		
Max media thickness	100mm											
Media type	Rigid and flexible flat materials											
Ink	Environmental friendly UV curable ink(VOC free)											
Ink color	C、M、Y、K、Lc、Lm、W (varnish is optional when there is no Lc and Lm)		C、M、Y、K、Lc、Lm、W、V									
Image format	Adobe Postscript Level3、PDF、JPEG、TIFF、EPS、AI											
Machine size(L*W*H)	3.44m * 2.21m * 1.28m		4.67m * 2.51m * 1.38m				5.22m * 3.24m * 1.38m			5.22m * 2.71m * 1.38m		
Machine net weight	570KG		1150KG				1520KG			1450KG		
Machine gross weight	990KG		1745KG				2330KG			2160KG		
Power consumption	5.3KW(27A)		8.3KW(20A)									
Power supply	230VAC.50Hz L/N/PE		400VAC.50Hz 3P/N/PE									
Certification	CE, FCC											
RIP support	Onyx, Caldera(Ricoh Gen5 Seeget rip optional)											
UV Curing	Mercury vapor UV lamps, LED(optional)											
Interface	High Speed PCIE											
Environment	Seperated workroom in good cleaning and ventilated condition, avoid direct sunlight Temperature: 18°C – 30°C(64°F-86°F) Constant Humidity: 30%-70%											

HandTOP



Create value for customers; be a world-leading manufacturer of smart digital printing equipment.

- Diversified product configuration and application solution can match the different demand in advertising, decorating, glass and other industries.
- Reliable stability combines the outstanding printing quality and speed performance.
- Top-level R&D team ensures prompt optimization and upgrade for new products and keep advanced technology in digital printing field.
- Strong worldwide after-sales service team quickly shoots your problem.
- High cost-value product brings you more business.



HT3116UV Flatbed

3.1*1.6m MEDIA AREA

HT3020UV Flatbed

3.05*2.05m MEDIA AREA

HT2512UV Flatbed

2.5*1.22m MEDIA AREA

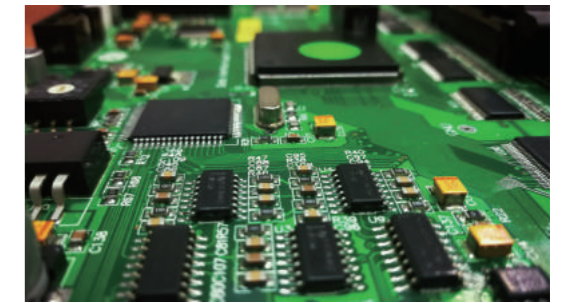
HT1610UV Flatbed

1.6*1.0m MEDIA AREA

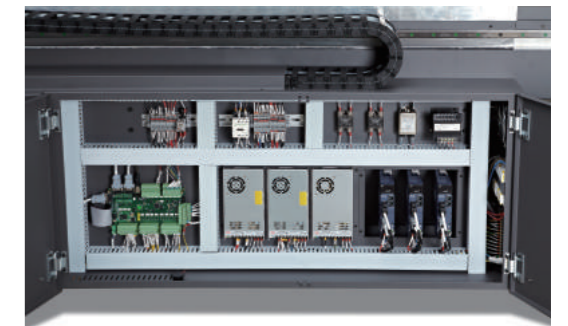
- 1 Automatic negative pressure system
Using PCB board to control negative pressure, setting the negative pressure data from software.
- 2 Ricoh Gen5 Print Heads(one head with 2 colors)
Featuring variable dots, true grayscale imaging 7, 14, and 21pl.

Kyocera Print Heads(one head with 2 colors)
Featuring variable dots, true grayscale imaging 4, 6, and 10pl at true native 300 dpi.
- 3 UV-curing Lamps/LED(optional)
Instant curing of UV ink for fast production. Flexible to be controlled during printing.
- 4 Auto Height Detection System
Automatically detects height of media up to 100mm thickness and calibrates print head distance for variable dot placement.
- 5 Emergency Stop Switches
Stop operation from any corner when the printer is in emergency.
- 6 Power vacuum & Lamp Switch
Switches for vacuum table and lamps.
- 7 Mechanical Pin Registration System
Pin registration for accurate and consistent rigid media placement.
- 8 Reversible Vacuum Valve
Reverse the air vacuum for easier rigid media loading and unloading.

- 9 Reversible printing function & Repeat printing mode
Both reversible and repeat printing mode enables a higher efficiency in production.
- 10 Top Printing Speed:Up to 91 m² / hr (HT3020)
Engineered for high-quality printing and outputs up to 91m²/hr with full bleed capacity.(HT3020 kyocera with double rows)
- 11 Static suppression(optional)
Optional static suppression kit that eliminates static on the substrate.
- 12 On Board Control Module
Rich functions, self-developed software, independent control module, efficient and convenient.



Self-developed, customized driver and PCB board



Industrialized wiring makes it more artistic

Kyocera KJ4A Printhead

Nozzle quality : 2656
Physical Resolution : 2*300dpi
Pico-litter : Variable 4-6-10pl
Max Operating Frequency : 30Khz
Effective Print Width : 112.35mm



Ricoh Gen5 Printhead

Nozzle quality : 1280
Physical Resolution : 600dpi
Pico-litter : Variable 7-14-21pl
Max Operating Frequency : 30Khz
Effective Print Width : 54.1mm

